

Potential new MOL designation NEW1

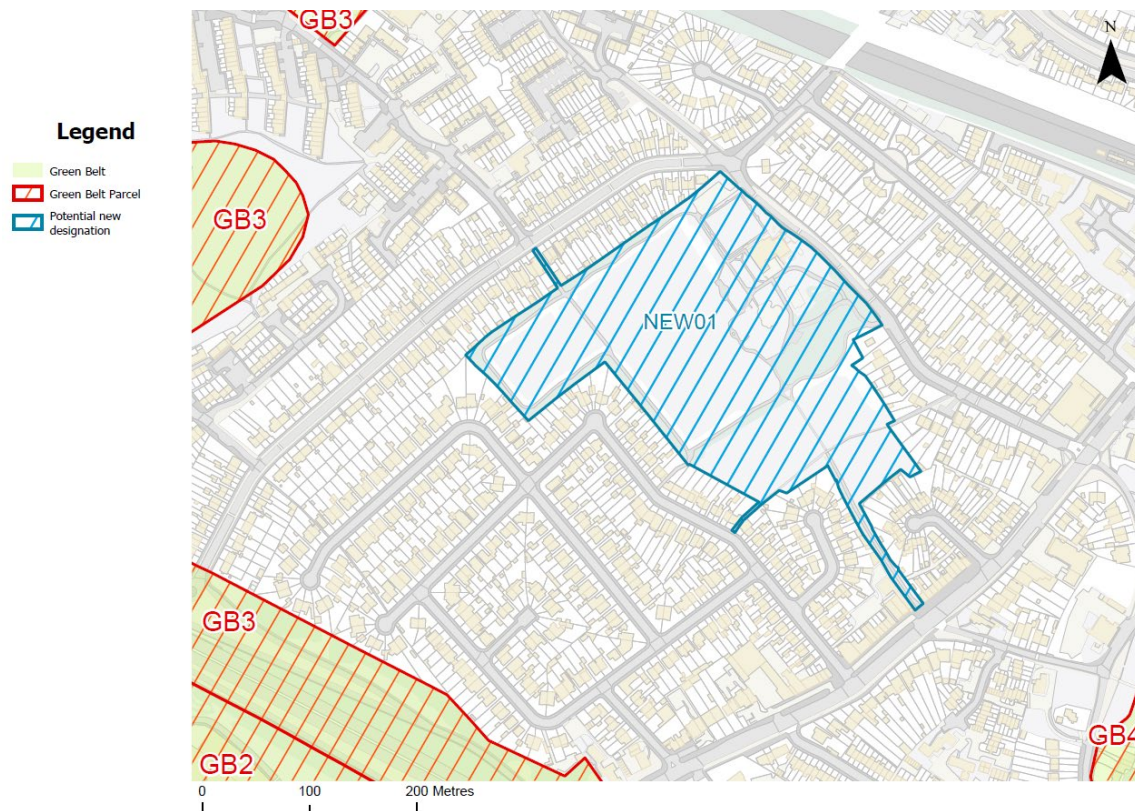
Parcel Name/Number: NEW01, Islip Manor Park, Eastcote Lane, Northolt, UB5 5RG

Current Designation: Public Open Space

Date of Review: 16/11/2015 and 09/03/2021

Name of Reviewer: KD/ ID

NEW1 – Map of site



Site photos



Assessment against Green Belt purposes

Purpose	Significance/Contribution	Notes
1.To check unrestricted sprawl of large built-up areas	N/A	
2.To prevent neighbouring towns from merging into one another	N/A	
3.To assist in safeguarding the countryside from encroachment	N/A	

Assessment against MOL purposes/defining criteria

Criteria	Significance/Contribution	Notes
A. It contributes to the physical structure of London by being clearly distinguishable from the built-up area.	Slight/negligible importance	As a greenspace in the midst of a residential area, the site looks different from its surroundings. However, the significance of this distinguished difference is slight to negligible.
B. It includes open air facilities, especially for leisure, recreation sports, arts and cultural activities, which serve either the whole or significant parts of London.	No importance	Locally important, however due to the relatively small size of the site, it is unlikely that the offer could be further expanded in the future to accommodate a wider catchment.

Criteria	Significance/Contribution	Notes
C. It contains features or landscapes (historic, recreational, biodiversity) of national or metropolitan value.	No importance	The north-western corner of the site contains a community orchard and a nature area, which is small in size and of local importance only. There would be no potential to enhance this due to the small scale of the site.
D. It forms part of a green chain or link in the network of green infrastructure and meets one of the above criteria.	No importance	None of the above criteria apply and the parcel is isolated from other green infrastructure. There are no green corridors leading to the site and due to its 'urban park' character, it would be difficult to connect it to any wider green network.

Potential new MOL designation NEW2

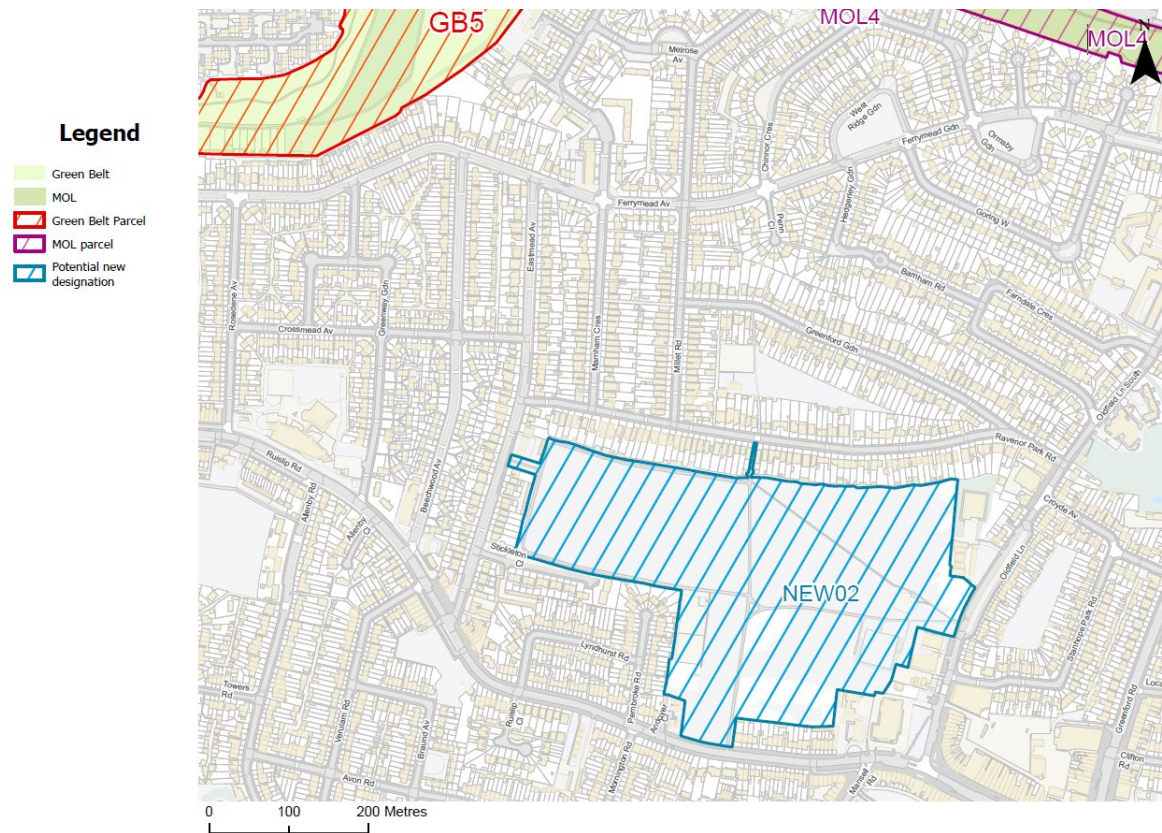
Parcel Name/Number: NEW02, Ravenor Park, UB6 9LB

Current Designation: Public Open Space

Date of Review: 21/01/2016 and 01/03/2021

Name of Reviewer: IW / KDE / ID

NEW2 – Map of site



Site photos



Assessment against Green Belt purposes

Purpose	Significance/Contribution	Notes
1.To check unrestricted sprawl of large built-up areas	N/A	
2.To prevent neighbouring towns from merging into one another	N/A	
3.To assist in safeguarding the countryside from encroachment	N/A	

Assessment against MOL purposes/defining criteria

Criteria	Significance/Contribution	Notes
A. It contributes to the physical structure of London by being clearly distinguishable from the built-up area.	Slight/negligible importance	The land forms a very small break in the built form synonymous with an urban park, rather than an expanse of open land.
B. It includes open air facilities, especially for leisure, recreation sports, arts and cultural activities, which serve either the whole or significant parts of London.	No importance	The children's playground, basketball courts, tennis courts and open-air gym make a significant contribution to the local leisure and recreation offer. But they do not serve the whole or significant parts of London.

Criteria	Significance/Contribution	Notes
C. It contains features or landscapes (historic, recreational, biodiversity) of national or metropolitan value.	No importance	There are no historic, recreational or biodiversity features within the parcel.
D. It forms part of a green chain or link in the network of green infrastructure and meets one of the above criteria.	No importance	The land does not form part of a green link and there is little to no potential to form such a link.

Potential new MOL designation NEW3

Parcel Name/Number ...NEW03, Southall Park

Current Designation: Public Open Space

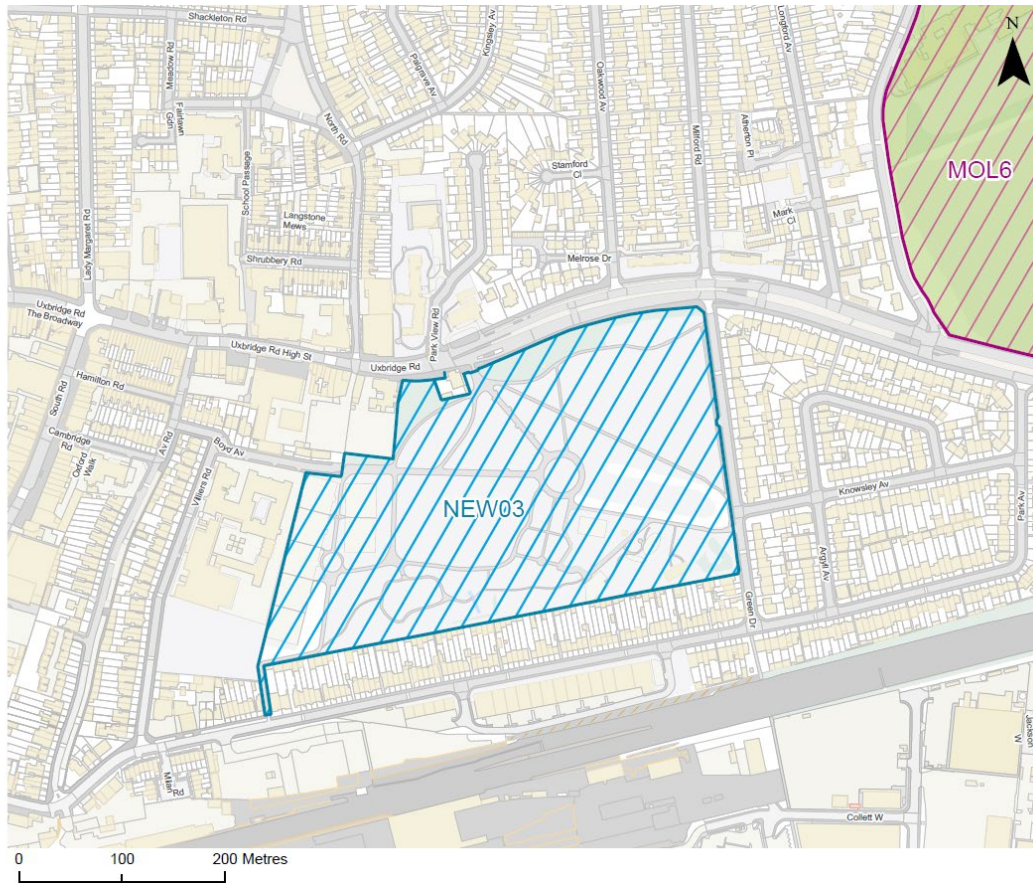
Date of Review... 01/04/2021

Name of Reviewer ... ID

NEW3 – Map of site

Legend

- MOL
- MOL parcel
- Potential new designation



Site photos



Assessment against Green Belt purposes

Purpose	Significance/Contribution	Notes
1.To check unrestricted sprawl of large built-up areas	N/A	
2.To prevent neighbouring towns from merging into one another	N/A	
3.To assist in safeguarding the countryside from encroachment	N/A	

Assessment against MOL purposes/defining criteria

Criteria	Significance/Contribution	Notes
A. It contributes to the physical structure of London by being clearly distinguishable from the built-up area.	Slight/negligible importance	Although comparable in size to some of the smaller MOL parcels currently designated in the borough, unlike these other designated parcels which are typically contiguous with a larger network and whose scale can be appreciated in these terms, this site is isolated from other areas of open space. Based on size alone the scale of this parcel is not considered to be significant structurally. Based on its siting it is also noted that the space sits within a definable neighbourhood, rather than separating distinct areas. That said, this parcel does have a number of defining features which sets it apart from comparable standalone sites. Most notably, this parcel is largely open on two sides (Uxbridge Road and Green Drive), affording views across the site from neighbouring streets, and this creates a strong impression of a break.
B. It includes open air facilities, especially for leisure, recreation sports,	Slight/negligible importance	The site is well used and appreciated as a resource, although principally it functions as municipal park serving the needs of the local community of Southall. Based on its size the park is classified as a Local Park. Containing one of the largest Sikh communities in

Criteria	Significance/Contribution	Notes
arts and cultural activities, which serve either the whole or significant parts of London.		the country Southall hosts many cultural events, and the park does at times accommodate such activities. Whilst such events can attract visitors from further afield, the park itself does not contain any permanent features or facilities.
C. It contains features or landscapes (historic, recreational, biodiversity) of national or metropolitan value.	No importance	A small section of the parcel at its southern end is managed for nature conservation, and this area is designated as a SINC, although it is noted that its value is of local significance only.
D. It forms part of a green chain or link in the network of green infrastructure and meets one of the above criteria.	No importance	As noted above the site is isolated from other green spaces, and there is limited potential to enhance this in the future.

Potential new MOL designation NEW4

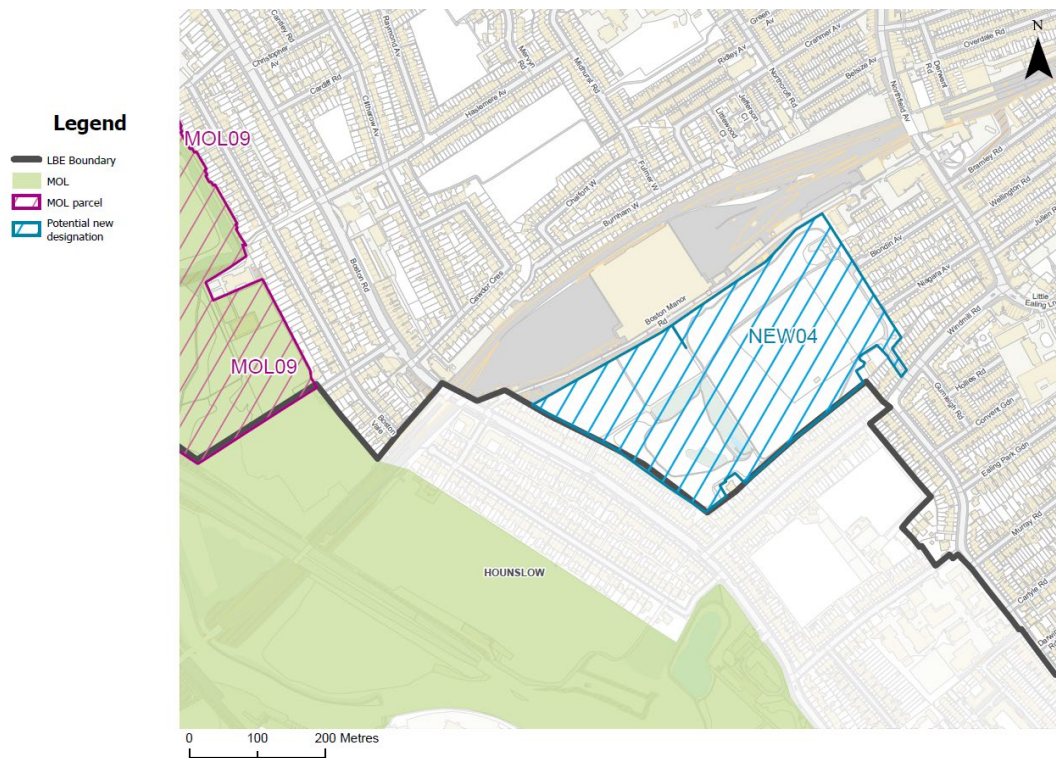
Parcel Name/Number ...NEW04 Blondin Park

Current Designation: Public Open Space

Date of Review ...22/02/16 and 23/04/2021

Name of Reviewer ...IW / KD / ID

NEW4 – Map of site



Site photos



Assessment against Green Belt purposes

Purpose	Significance/Contribution	Notes
1.To check unrestricted sprawl of large built-up areas	N/A	
2.To prevent neighbouring towns from merging into one another	N/A	
3.To assist in safeguarding the countryside from encroachment	N/A	

Assessment against MOL purposes/defining criteria

Criteria	Significance/Contribution	Notes
A. It contributes to the physical structure of London by being clearly distinguishable from the built up area.	Slight/negligible importance	This parcel is relatively small and isolated from other areas of open space. It essentially forms an island site which is locked in by adjoining residential properties. Only limited public views exist across the site from its boundary, including from the end of Blondin Avenue and Niagara Avenue. The views from other accesses on Swyncombe Avenue and Boston Manor Road are limited further. The north-western boundary of the site adjoins Northfields Depot, and so the site is also partially visible from passing trains. Whilst the parcel does form a gap in the urban form, the scale of this break is not considered to be significant at a strategic level and the break is only really appreciated from private land.
B. It includes open air facilities, especially for leisure, recreation sports, arts and cultural activities,	No importance	The site contains no such facilities.

Criteria	Significance/Contribution	Notes
<p>which serve either the whole or significant parts of London.</p>		
<p>C. It contains features or landscapes (historic, recreational, biodiversity) of national or metropolitan value.</p>	<p>Slight/negligible importance</p>	<p>The allotments and nature area to the south/west of the site are designated as a SINC, although of local importance only.</p>
<p>D. It forms part of a green chain or link in the network of green infrastructure and meets one of the above criteria.</p>	<p>Slight/negligible importance</p>	<p>The site is isolated from other MOL parcels, although it adjoins the railway line a Green Corridor which links to other open space sites. The northern edge of the railway line furthest from the site is of greater significance as a Green Corridor as this is the only section which is vegetated.</p>

Potential new MOL designation NEW5

Parcel Name/Number ...NEW05 Twyford Avenue Sports Ground

Current Designation: Community Open Space

Date of Review ...22/02/16 and 23/04/2021

Name of Reviewer ...IW / KD / ID

NEW5 – Map of site



Site photos



Assessment against Green Belt purposes

Purpose	Significance/Contribution	Notes
1.To check unrestricted sprawl of large built-up areas	N/A	
2.To prevent neighbouring towns from merging into one another	N/A	
3.To assist in safeguarding the countryside from encroachment	N/A	

Assessment against MOL purposes/defining criteria

Criteria	Significance/Contribution	Notes
A. It contributes to the physical structure of London by being clearly distinguishable from the built-up area.	No importance	This parcel is relatively small and isolated from other areas of open space. This parcel essentially forms an island site which is locked in by adjoining residential properties and a school. Given its island condition only limited public views exist across the site from its boundary. From the main access off Twyford Avenue views are restricted by the presence of internal boundary walls and other structures and parking area. The clearest views are evident from the end of Buxton Gardens. As the site is largely open, clear of trees and other structures, views across the site are fairly uninterrupted from this point and from within the site. Despite its openness, its scale is not considered to be significant at a strategic level, and this break is only really appreciated from within the parcel and from private land.
B. It includes open air facilities, especially for leisure, recreation sports,	Slight/negligible importance	The majority of the site at present is currently in use as a sports ground. Wasps Amateur Rugby club currently owns the majority of the site and it is used by its members. Pupils from Twyford High School also have limited access. Although the site serves a

Criteria	Significance/Contribution	Notes
arts and cultural activities, which serve either the whole or significant parts of London.		catchment which is wider than that of the borough, the scale and the type of facilities offered here are such that it couldn't be said to serve the whole or significant parts of London.
C. It contains features or landscapes (historic, recreational, biodiversity) of national or metropolitan value.	No importance	It is noted that the northern half of the parcel is designated as an Archaeological Interest Area. Whilst this is significant it has no bearing on its landscape or openness.
D. It forms part of a green chain or link in the network of green infrastructure and meets one of the above criteria.	No importance	This site is isolated from other parcels or green links.

Potential new MOL designation NEW6

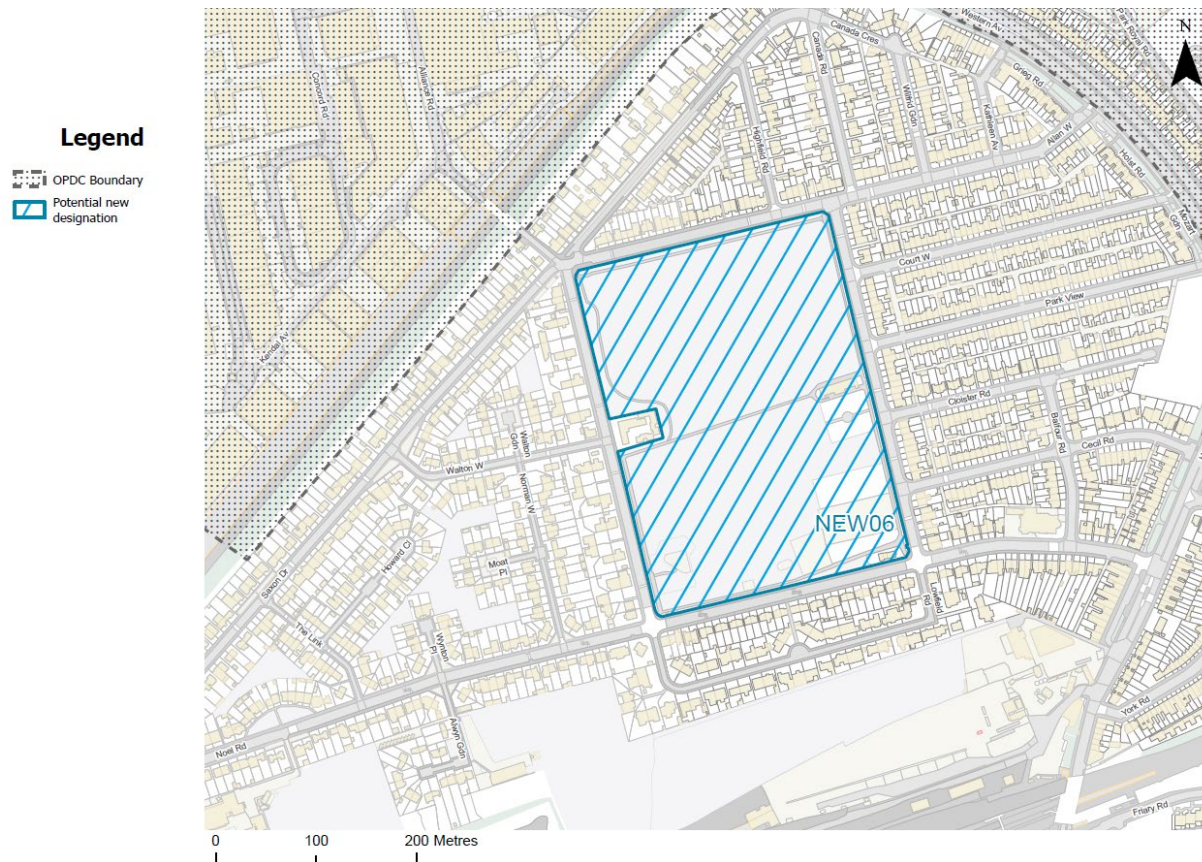
Parcel Name/Number: NEW06, North Acton Playing Fields, W3 0JF

Current Designation: Public Open Space

Date of Review: 07/03/2016 and 23/04/2021

Name of Reviewer: KDE / IW / ID

NEW6 – Map of site



Site photos



Assessment against Green Belt Purposes

Purpose	Significance/Contribution	Notes
1.To check unrestricted sprawl of large built-up areas	N/A	
2.To prevent neighbouring towns from merging into one another	N/A	
3.To assist in safeguarding the countryside from encroachment	N/A	

Assessment against MOL purposes/defining criteria

Criteria	Significance/Contribution	Notes
A. It contributes to the physical structure of London by being clearly distinguishable from the built up area.	Slight/negligible importance	The land forms a less obvious gap in urban form and all of it is contained within North Acton. It does not separate distinct settlements or distinguish between built up areas. A break in urban form is achieved by the land; however, this is not of any strategic, regional or even local importance.
B. It includes open air facilities, especially for leisure, recreation sports, arts and cultural activities, which serve either the whole or significant parts of London.	No importance	The land contains North Acton playing fields, which is are used for local play and less for the purposes of organised sports. The playing fields contain several football goal frames and the pitches are not marked out. There is little potential for this land to be upgraded to accommodating any activity of strategic or regional importance; however, there is scope for local enhancements/investment to be incorporated.

Criteria	Significance/Contribution	Notes
C. It contains features or landscapes (historic, recreational, biodiversity) of national or metropolitan value.	No importance	The site does not contain any features of historic, recreational or biodiversity of national or metropolitan value.
D. It forms part of a green chain or link in the network of green infrastructure and meets one of the above criteria.	No importance	The site is isolated from other green spaces in the borough and is not part of a green chain/link. There is also little potential to enhance this in the future.